

**“THE PLACE TO BE”
AT THE HEART OF EUROPE!
FRANCE – GERMANY – SWITZERLAND**

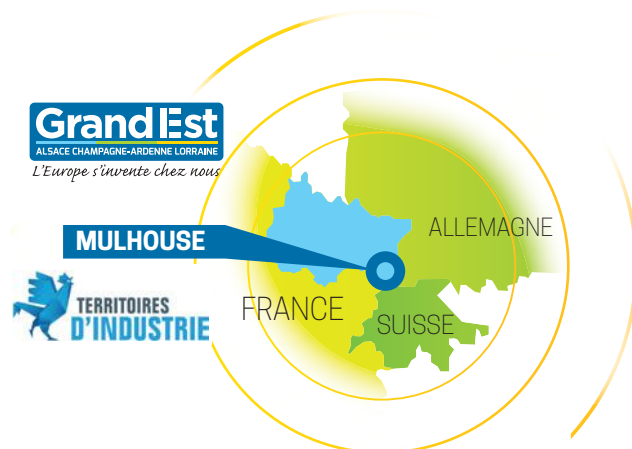


“The place to BE” at the heart of Europe!

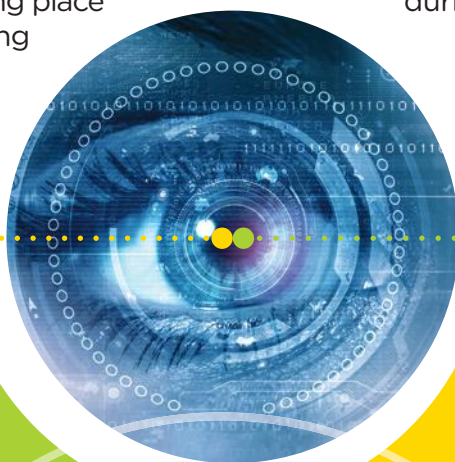
The BE 4.0 2019 trade show located in the Grand Est region of France, partner of the French Fab Tour, takes place at Mulhouse, a city which has been awarded the Regions of Industry label.

As the leading French region with regard to industrial investments (automotive, aerospace, energy, etc.), it is the benchmark for Advanced Manufacturing.

Located at the confluence of French, German (Industry 4.0) and Swiss (Industry 2025) strategies, the trade show has established itself over the years as the ideal meeting place for official announcements and signing agreements for regional industry.



The quality of the congress and the expertise of the exhibitors offer major advantages during these two days of business dedicated to the industry of the future.



REVIEW OF THE 2019 EDITION:

10000 m²

of exhibition and conference space

4 114

visitors (20% increase) including 14% from abroad

507

B2B meetings (70% increase)

273

exhibitors (18% increase)

HIGH LEVEL OF SATISFACTION:

89%

of exhibitors are satisfied with the qualified contacts obtained during the trade show

82%

of visitors are satisfied with the trade show and its social interaction

88%

of exhibitors are satisfied with the commercial contact and logistical efficiency



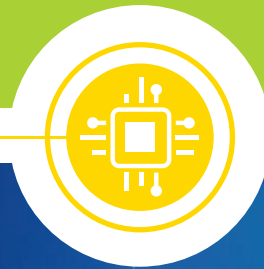
BE full business :
17 > 18 nov. 2020

BE STRONG

- Make best use of your time by meeting over 2 days the most important clients and companies in the region
- Show and demonstrate your knowledge
- Launch new products
- Canvas new markets, including international ones
- Carry out a technological and competition watch

BE STRONGER

- Make the most of the advice available for your custom-built or pre-packaged stand
- Increase your visibility with sponsorship tools
- Contribute to a professional congress by organising a conference
- Take part in B2B meetings free of charge
- Register for the Privilege & Networking evening
- Attend the tri-national plenaries



TO PROMOTE YOUR SOLUTIONS

- | | |
|---------------------------------|--------------------------------|
| ■ Support | ■ Human |
| ■ Industrial automation | ■ Digital infrastructures |
| ■ Big Data | ■ Artificial intelligence |
| ■ BIM | ■ Laboratory |
| ■ Technological resource centre | ■ Predictive maintenance |
| ■ 3D design | ■ Modelling |
| ■ Cloud computing | ■ Enterprise school project |
| ■ Non-destructive testing | ■ Industrial Ethernet networks |
| ■ Cybersecurity | ■ Robotics-cobotics |
| ■ Energy efficiency | ■ Simulation |
| ■ Additive manufacture | ■ Virtualisation |
| ■ Financing | ■ etc. |
| ■ Training | |



PARTNERS

- ACTEMIUM
- ARGONNE PRODUCTION
- CAISSE D'EPARGNE
- CCI ALSACE EUROMETROPOLE
- CCI GRAND EST
- CETIM GRAND EST
- CLEMESSEY
- DALKIA
- EDF
- EDF DEUTSCHLAND
- ENGIE
- ES
- Grand E-nov
- MULHOUSE ALSACE AGGLOMERATION
- ORANGE
- REGION GRAND EST
- SCHNEIDER ELECTRIC
- SEW USOCOME

SKILLS SOLUTION PROVIDERS

- AD'MISSIONS
- ALSACE TECH
- ARTS ET METIERS
- CESI ECOLE INGENIEUR
- CESI ECOLE MANAGER
- ECAM STRASBOURG EU
- EM STRASBOURG
- ENI METZ
- ENSEM
- ENSISA
- ESTA
- HEAR - ART&DESIGN
- INRIA
- INSA STRASBOURG
- IUT DE HAGUENAU
- LE CNAM / ARDAN
- UHA FORMATION
- UNIVERSITE DE REIMS
- UPPER RHINE 4.0

TECHNOLOGICAL SOLUTION PROVIDERS

- 4iTEC 4.0
- ACE-FORMATION POUR L'INDUSTRIE 4.0
- ACKSYS
- ACTENCY
- ACTINVISION
- ACTIVIS, E-MARKETING
- ACTIV'SYSTEME
- ADAMEO
- ADAPEI PAPILLONS BLANCS ALSACE
- ADDAGE INORI FA GE
- ADDI-DATA
- ADIRA
- ADVISA
- AGORA CALYCE
- AJ SOLUTIONS
- ALCIMIES MARKETING FORMATION
- ALCOM TECHNOLOGIES
- ALLRIM
- ALMEDIA FORMATION
- ALMOND
- ALTODIS
- AMA
- APAVE
- ARC INFORMATIQUE
- ARIA GRAND EST
- ARKANCE SYSTEMS

- ARMBRUSTER
- ASTI MOBILE ROBOTICS
- ASTREE SOFTWARE
- ASYSTOM
- ATOS
- AVATARION TECHNOLOGY SA
- AXIANS
- BAUMER
- BIOVALLEY FRANCE
- BOSSARD
- BRODEX
- CAPCOD
- CAPTRONIC
- CEA TECH
- CEVI
- CFE-ECLAIRAGE
- CGI
- CMS AUTOMATISME
- COMEPRI
- COMMUNAUTE DES OFFREURS DE SOLUTIONS
- CONSIGNITY
- CONSULAT GENERAL DE SUISSE
- COPA-DATA
- CORDERIE MEYER-SANSBOEUF
- DAES
- DEF
- DETAS ULTRA
- DIAMANT
- DIGISPORTS68
- DIGITAL EASE
- DIVALTO
- DOTSPOT
- EDITAG
- EKIU GROUP
- ELECTIS
- ELECTRO-RHIN
- ELEMENTAIRE
- EPICEA - EPISOFT
- ER INGENIERIE
- EUREKA SOLUTIONS
- FABLAB TECHNISTUB
- FANUC
- FARO
- FESTO
- FINAL ADVANCED MAT.
- FIRAC GROUPE SNEF
- FIRIS
- FK EUROPE
- FOURE LAGADEC
- FRENCH FAB GRAND EST
- FRENCH TECH EAST
- FSI FRANCE
- GAUSSIN MANUGISTIQUE
- GH INDUCTION
- GMAO 4.0 DIMO MAINT
- GOUTI-GESTION PROJET
- GROUPE-NOVTEK
- GULPLUG
- HESION SUISSE SA
- HEVERETT GROUP
- HLP
- HOLO3
- HUBSHARE
- HYDREOS
- IAR POLE BIOECONOMIE
- ICV IN PRACTICE
- IGE+XAO
- IGUS
- INR
- INSTITUT CARNOT ARTS
- INSTITUT CARNOT ICEEL
- INSTITUT CARNOT MICA
- INSTITUT DE SOUDURE
- INXMAIL
- ISITEC INTERNATIONAL
- IXON
- JME-ELECTRONIC
- KALLIOPE - IoT
- KEYVEO-KEYVEO STORE
- KMØ
- KUKA
- LEVELS3D
- LIGHTHOUSE SYSTEMS
- LORNTech
- LPMT
- MATERIALIA
- METHOD IN THE MADNESS
- MITWILL
- MONTRATEC GMBH
- MOSELLE ATTRACTIVITE
- MVV
- MY RFID SOLUTION
- N. SCHLUMBERGER
- NEMKO GMBH & CO.KG
- NORCAN
- OLYMPE SA
- OPTA LP
- PAYFIT
- PICOMTO
- POLE FIBRES-ENERGIVIE
- POLE FORMATION ALSACE
- POLE TEXTILE ALSACE
- POLE VEHICULE DU FUTUR
- PONANT TECHNOLOGIES
- PONZIO GROUPE
- PREDICT
- PRESSEQUIP
- PRO FACE
- PROALPHA
- PROCID
- PRODEO
- PROGLOVE
- PS INGENIERIE
- PSA GROUPE
- RB3D
- REVER
- RF CONCEPTION
- RHENATIC
- RTONE IOT MAKERS
- SATT
- SAUTER REGULATION
- SAVOIR-FAIRE LINUX
- SBS INTERACTIVE
- SCHAEFFER PRODUCTIQUE
- SDV
- SECMA
- SELMONI
- SENSOPART
- SESA SYSTEMS
- SFEIR-EST
- SIA
- SIEMENS
- SIMSOFT INDUSTRY
- SNEF
- SOGEDEV
- SOLU-TECH
- SOLUTYO
- SOVEC ENTREPRISES
- SPEEDERNET
- SPIE
- SPIE BATIGNOLLES
- STEMYS SA
- SWISS BUSINESS HUB FRANCE
- SWISS BUSINESS HUB GERMANY
- SWITZERLAND GLOBAL ENTREPRISE
- SYNTEC NUMERIQUE
- TECHNIQUES INGENIEUR

- TECHNOLOGY & STRATEGY
- THE WIW
- THURMELEC
- TRANCHAIN
- TRILOGIQ
- TRIVADIS
- UHA RECHERCHE
- USITAB
- VELUM
- VIF SOFTWARE
- VILLE TROIS-RIVIERES
- VISIATIV SOLUTIONS
- WAGO CONTACT
- WERMA FRANCE
- WIELAND ELECTRIC
- ZYFRA

START-UPS

- 3D-EST
- 7-SHAPES
- APREX-SOLUTIONS
- ARENZI TRACKING INDOOR
- Basel Area.swiss
- BEELSE
- BLIIDA/THE POOL
- BLOCKCHAIN RECORDIN'S SOLUTIONS
- BRAVE NEW MEDIA
- CREVOISIER SA
- DAVI LES HUMANISEURS
- DCBRAIN
- EASYLEAN+
- ECODESIGN STUDIO
- ELLISTAT
- ENERGIENCY
- ETIREO
- FLEXIO
- GREEN TECH INNOVATIONS
- HOLIMAKER
- HUMAN GAMES
- INTREXX
- KALLIOPE.CA
- KPITAINE
- LCB SARL
- LE VILLAGE BY CA
- LEANCURE
- LINEXOS
- MESSORTIES.FR
- MY DIGITAL BUILDINGS
- NAMKIN
- NEOBRIDGE E-LEARNING
- NEW-R-DRONE
- OBERA
- ORISUN IOT
- OXYCAR
- PERTECH SOLUTIONS
- PFT MICRO/PROTO
- PRECIPRINT 3D
- QIO GMBH
- REPLACE
- ROBOCORTEX
- SEMIA
- SHINE RESEARCH
- SHIZEN
- SIFOEE INNOVATION
- SPURO BLOCKCHAIN
- STARTLEASE
- TEEPTRAK
- TIKAWAY
- UNITELABS AG
- V-OPTICS
- VRT - VIRTUALRTRAINING
- WAVELY
- WuDo

INDUSTRY

BE 4.0



2 Close-Up
in 2020

ENERGY TRANSITION TO GREEN GROWTH

Energy transition and transition to a circular economy are at the heart of the challenges for the industry of the future. Energy efficiency, renewable energy, saving of resources, prevention and management of waste, industrial ecology, eco-design and economy of functionality - all challenges that companies must now meet. The objectives to be achieved are ambitious and the technological developments will be a central element of this dynamic!



DIGITAL INNOVATION ACCELERATING INDUSTRIAL TRANSFORMATION

Design, production and maintenance have greatly evolved in recent years under the impetus of digital innovation. Artificial intelligence, connected objects and 5G are amongst the key technologies promoting new uses that will help accelerate the transformation of industries, whilst ensuring that employees are supported in the evolution of their jobs and without omitting the issue of infrastructure and data security.



YOUR CONTACTS

■ **Adeline LEDER**

Exhibition Superintendent

+33 (0)6 25 19 08 7

aleder@parcexpo.fr

■ **Camille DIETSCH**

Business Manager (International & France)

+33 (0)7 85 73 13 61

cdietsch@parcexpo.fr

■ **Julien HAUSWIRTH**

Project Manager

+33 (0)6 48 64 47 74

jhauswirth@parcexpo.fr

■ **Maureen SCHERRER**

Administrative Manager

+33 (0)6 38 78 58 32

mscherrer@parcexpo.fr

WWW.INDUSTRIESDUFUTUR.EU



BE 4.0 SALON INDUSTRIES DU FUTUR

PARC EXPO.fr
MULHOUSE